

MINISTÉRIO DO INTERIOR

Comando-Geral da Polícia de Segurança Pública

Para os devidos efeitos se publicam os modelos das figuras a que se refere o Decreto n.º 41 798, de 8 de Agosto de 1958, que aprova o plano de uniformes da Polícia de Segurança Pública.

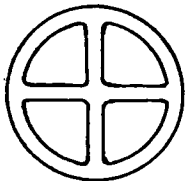


Fig. 1



Fig. 2



Fig. 3

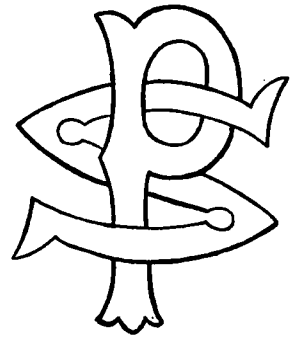


Fig. 4

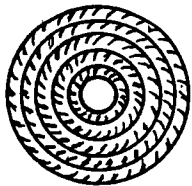


Fig. 5

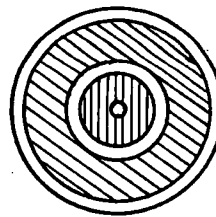


Fig. 5-A

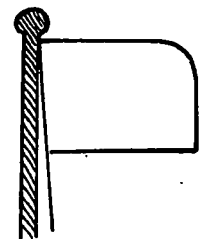


Fig. 6

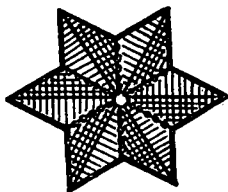


Fig. 7

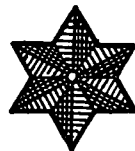


Fig. 8



Fig. 9



Fig. 9-A

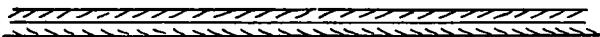


Fig. 10

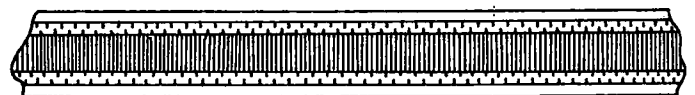


Fig. 11

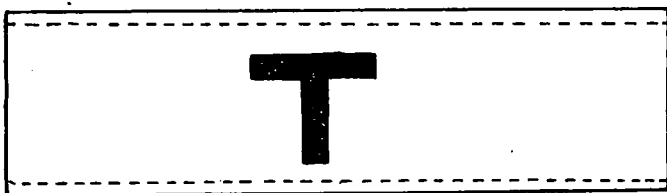


Fig. 12

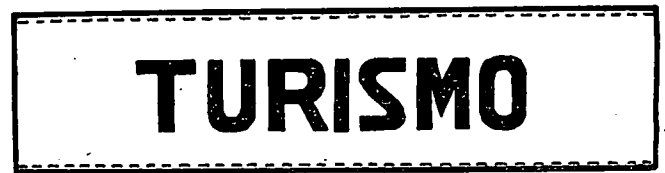


Fig. 13

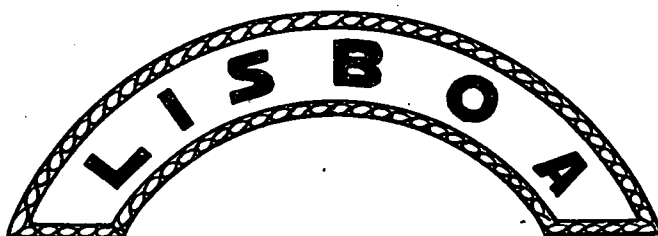


Fig. 14

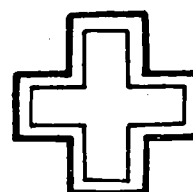


Fig. 15



Fig. 16



Fig. 17

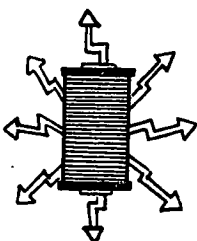


Fig. 18

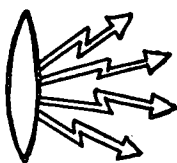


Fig. 19

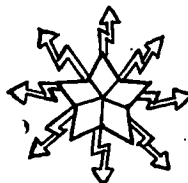


Fig. 20



Fig. 21



Fig. 21-A

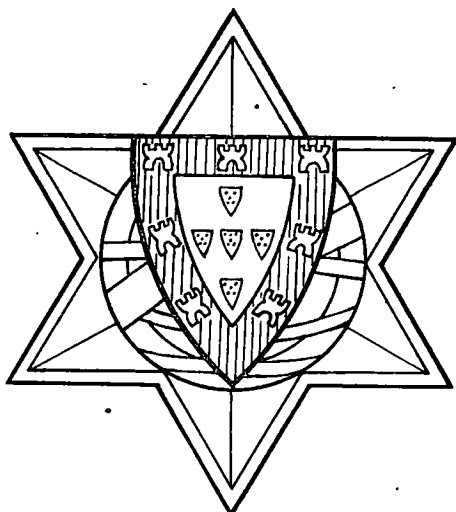


Fig. 22



Fig. 23

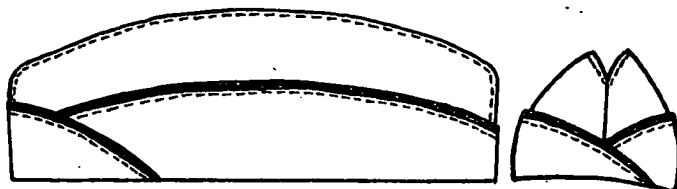


Fig. 24

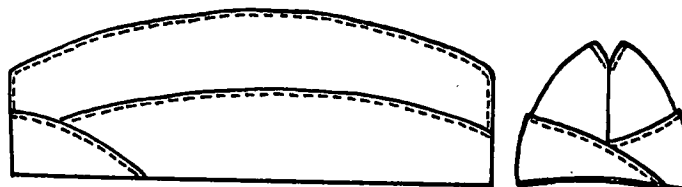


Fig. 25

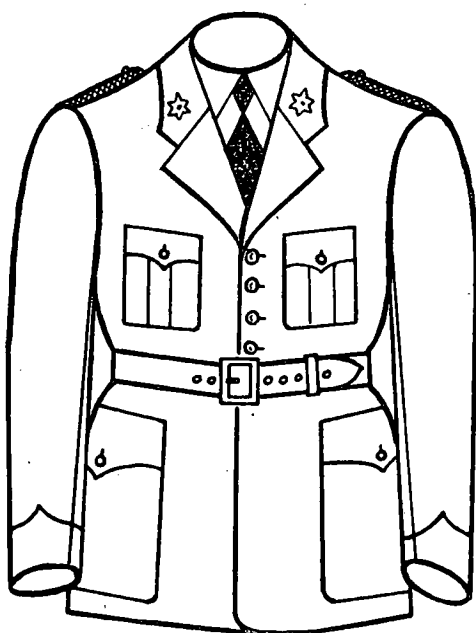


Fig. 26

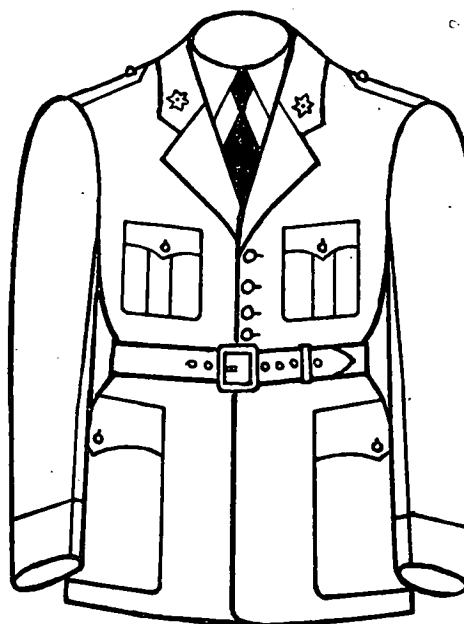


Fig. 27

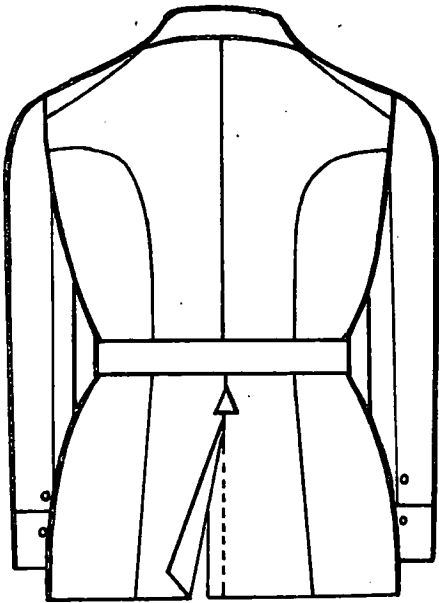


Fig. 28

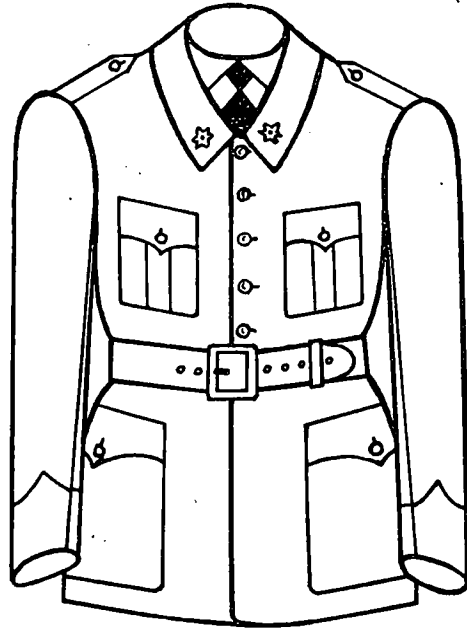


Fig. 29

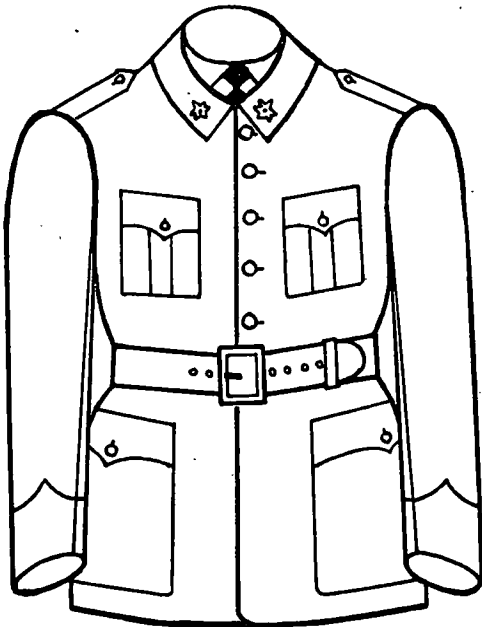


Fig. 30

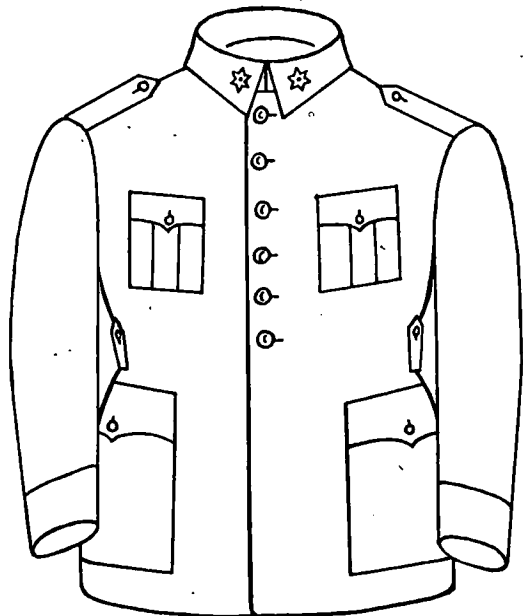


Fig. 31

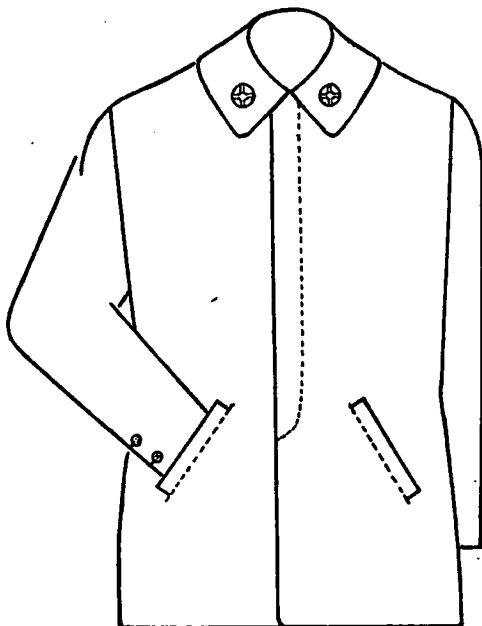
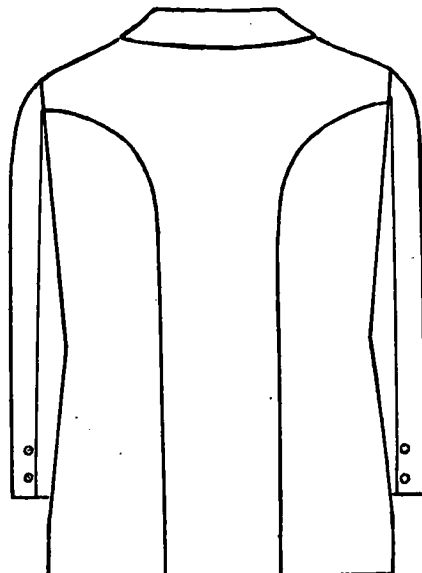


Fig. 31-A



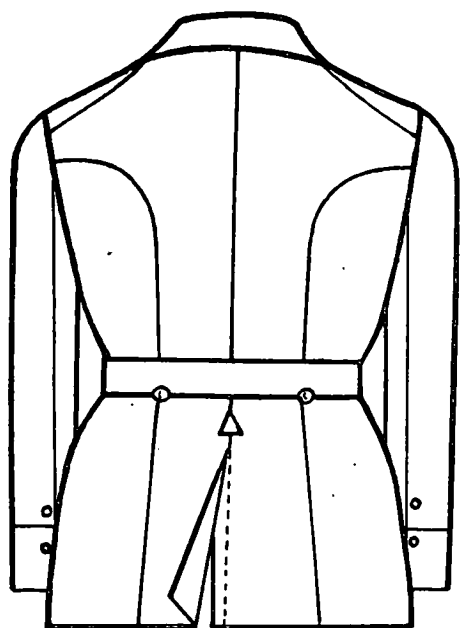


Fig. 32

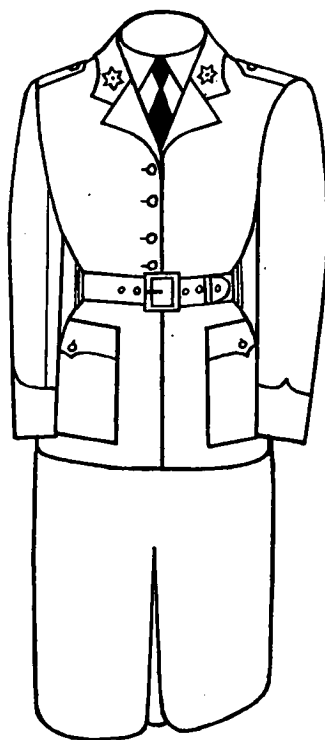


Fig. 33

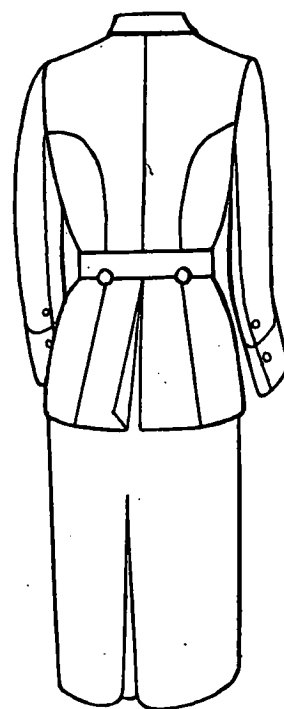


Fig. 34

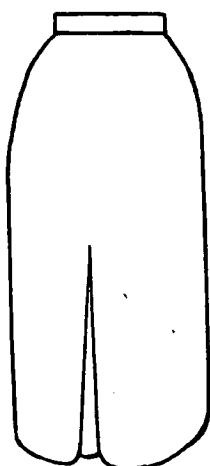


Fig. 35

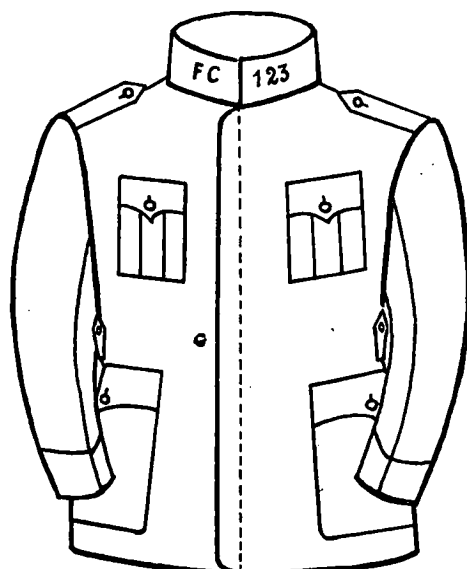


Fig. 36

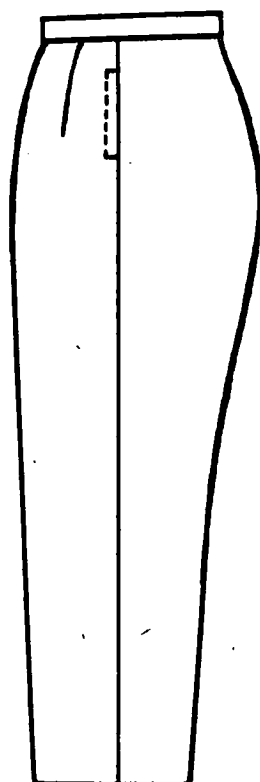


Fig. 37

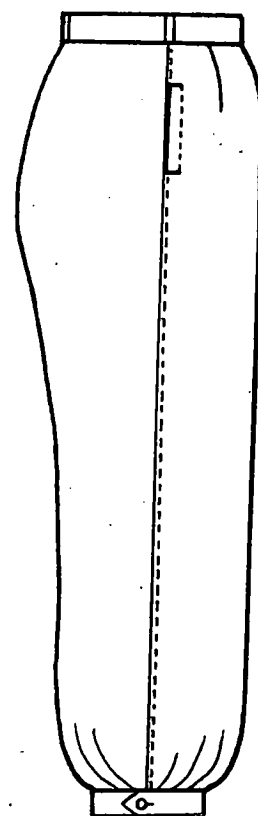


Fig. 38

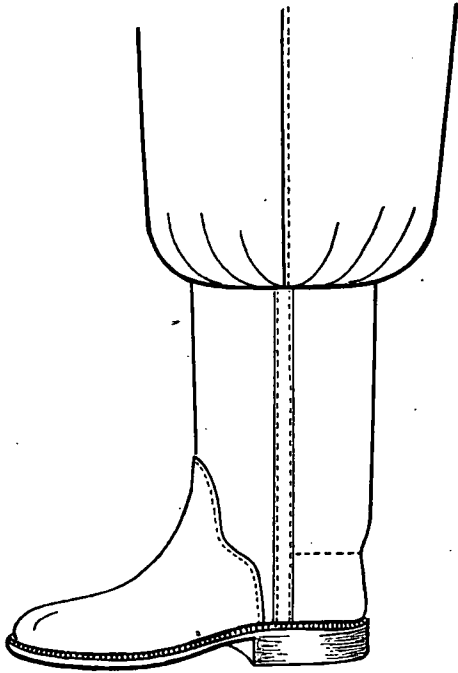


Fig. 39

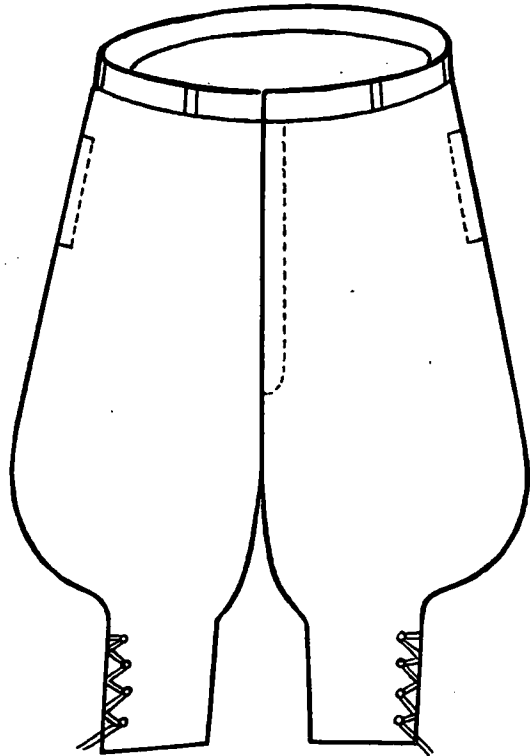


Fig. 40

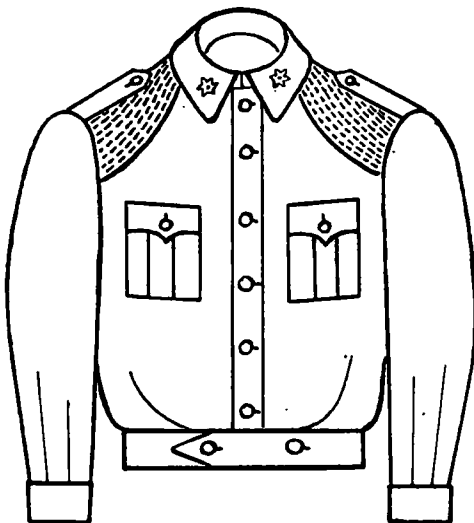


Fig. 41

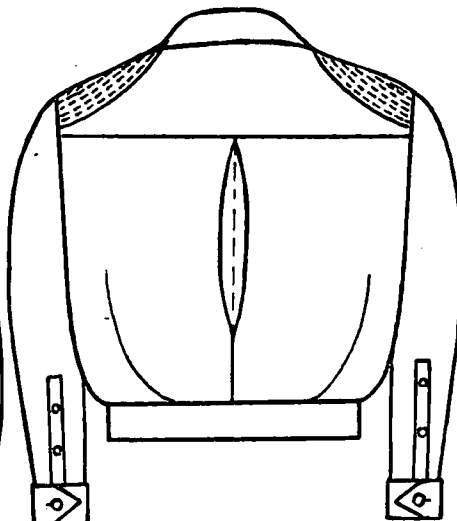


Fig. 42

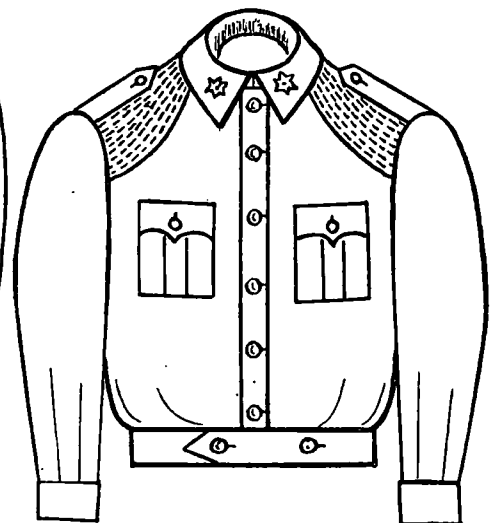


Fig. 43

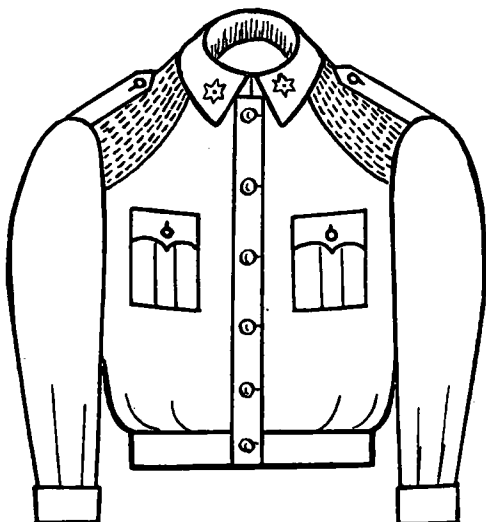


Fig. 44

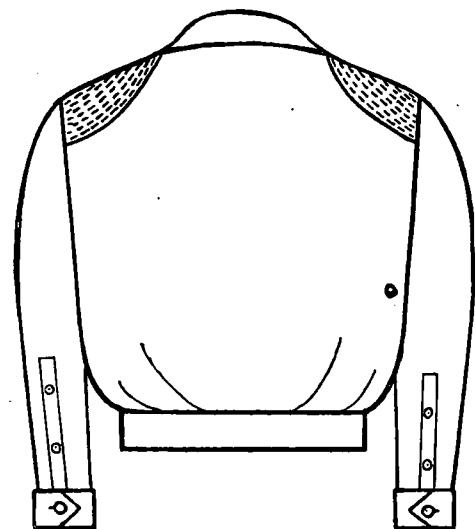


Fig. 45

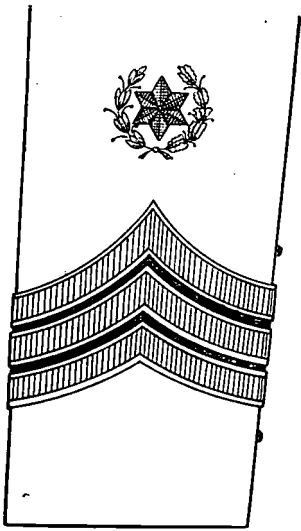


Fig. 46

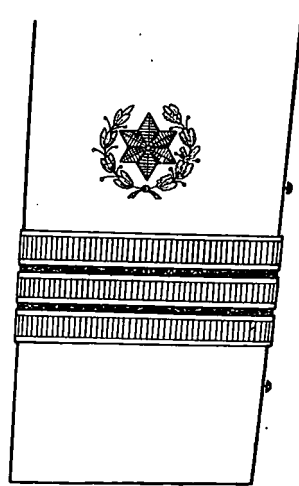


Fig. 46-A

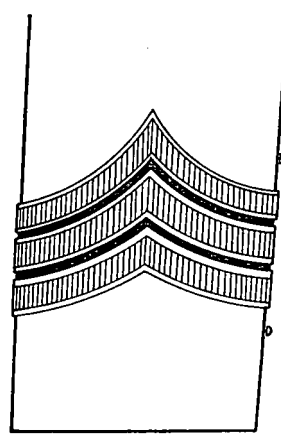


Fig. 47

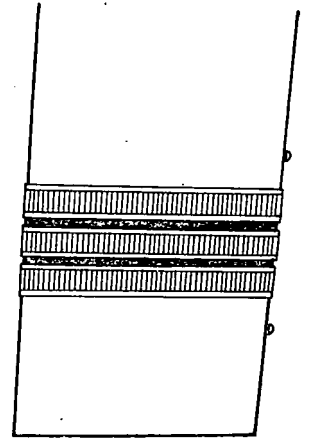


Fig. 48

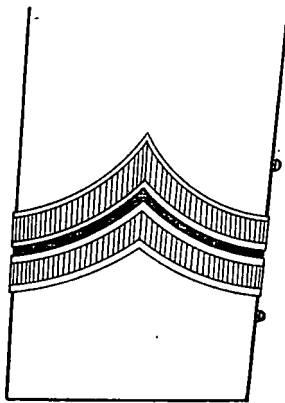


Fig. 49

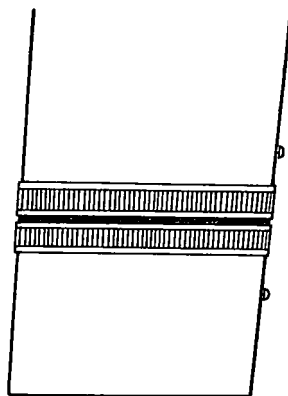


Fig. 50

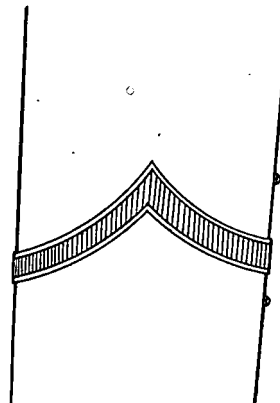


Fig. 51

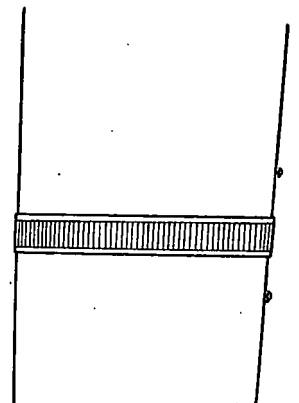


Fig. 52

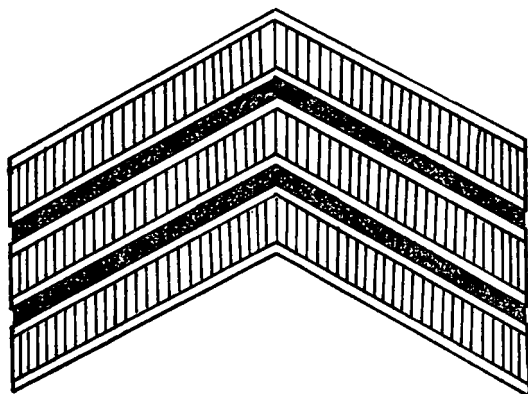


Fig. 53

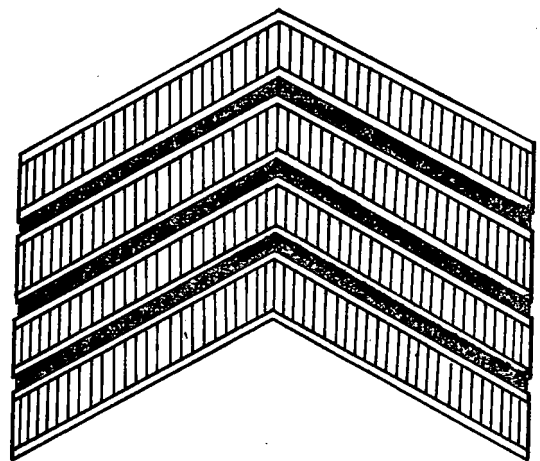


Fig. 54

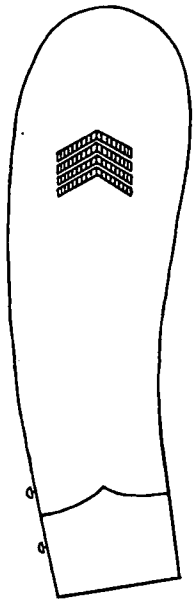


Fig. 55

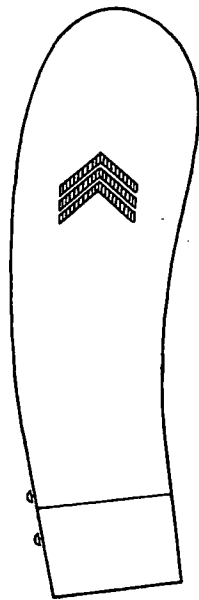


Fig. 56

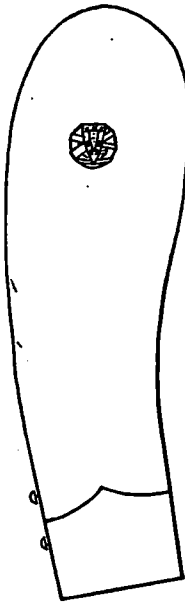


Fig. 57



Fig. 58

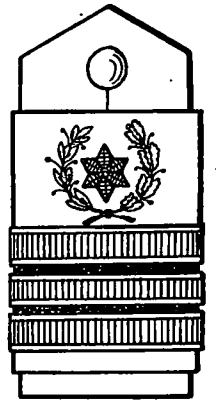


Fig. 59

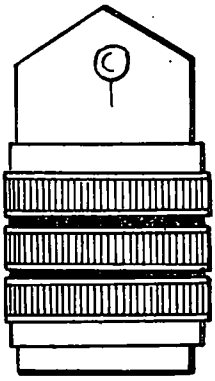


Fig. 60

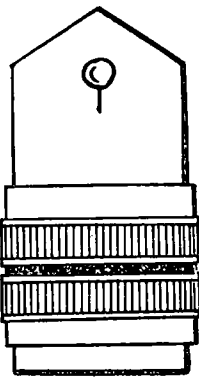


Fig. 61

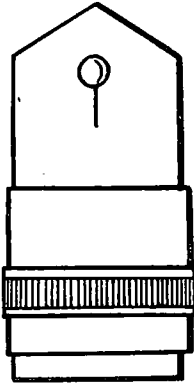


Fig. 62

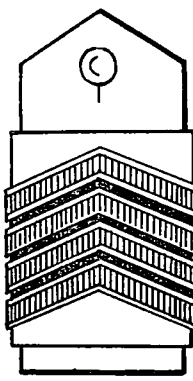


Fig. 63

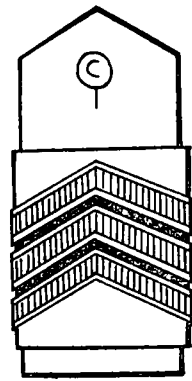


Fig. 64

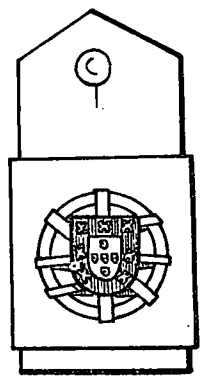


Fig. 65

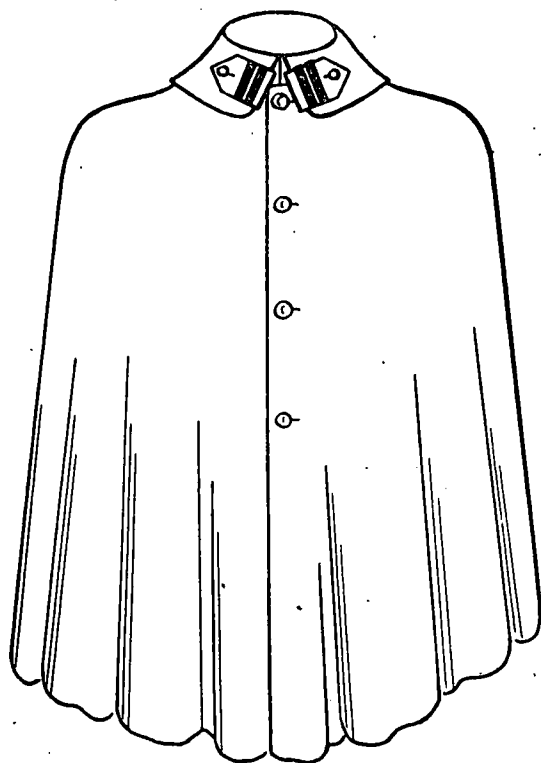


Fig. 66

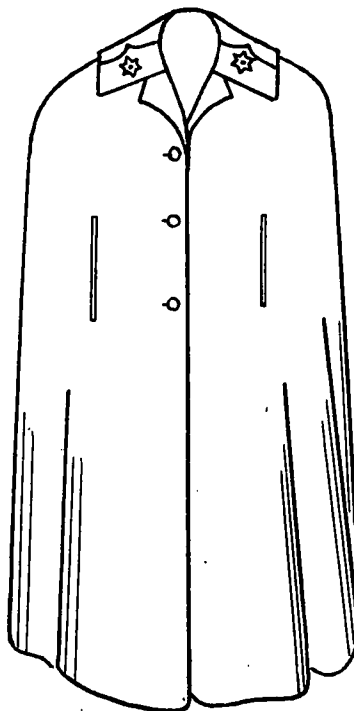


Fig. 67

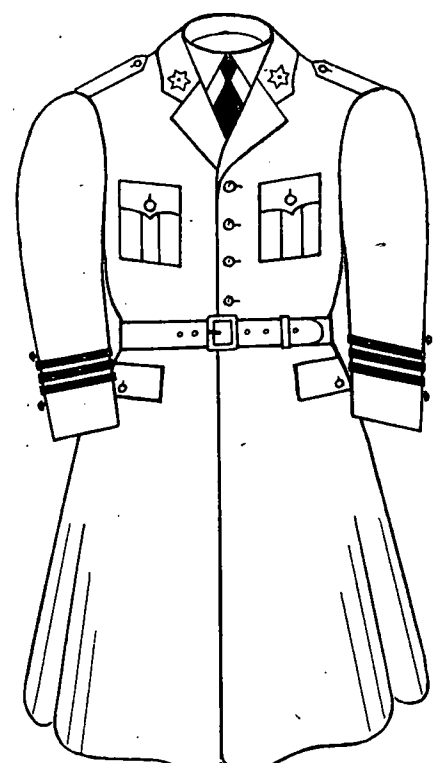


Fig. 68

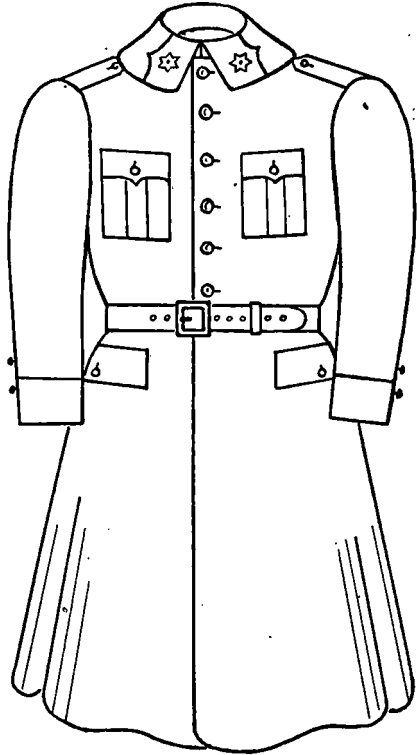


Fig. 69

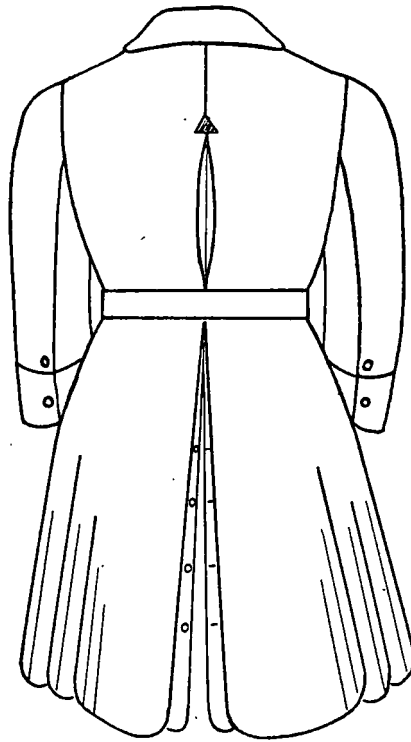


Fig. 70

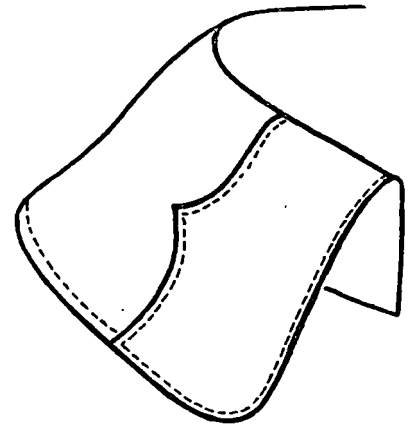


Fig. 71

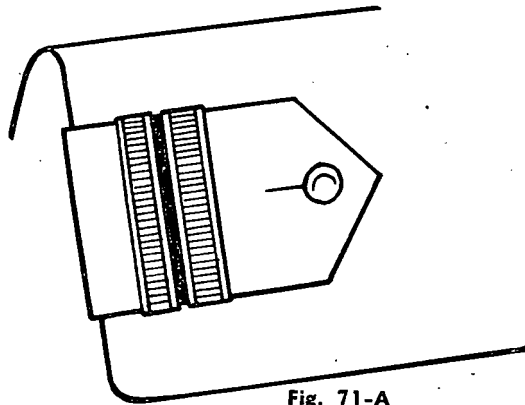


Fig. 71-A

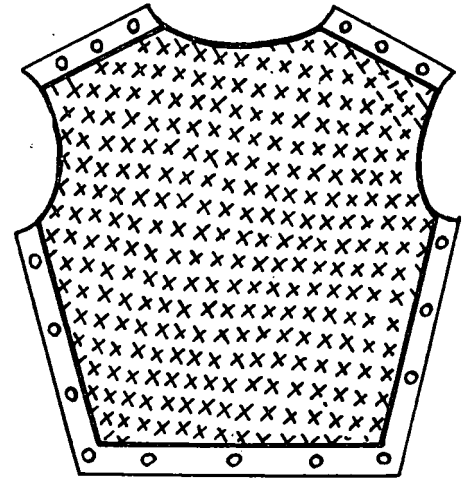


Fig. 73

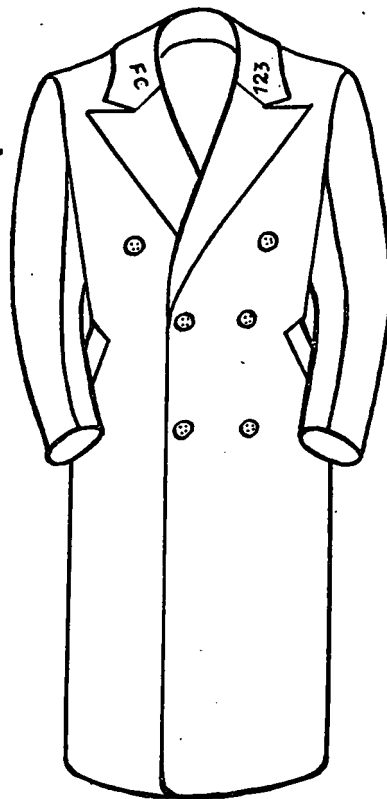


Fig. 72

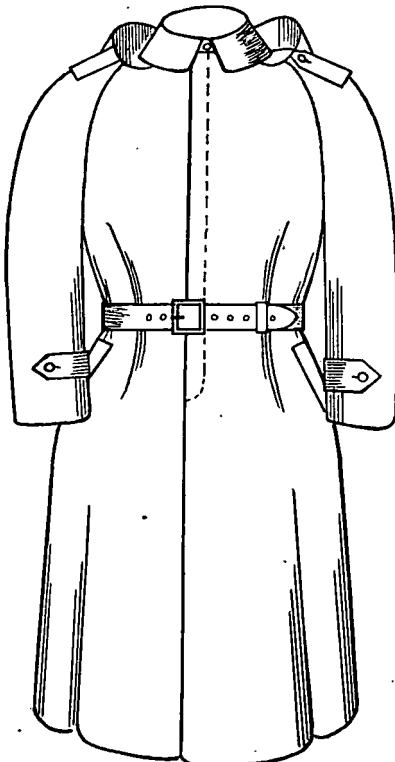


Fig. 74

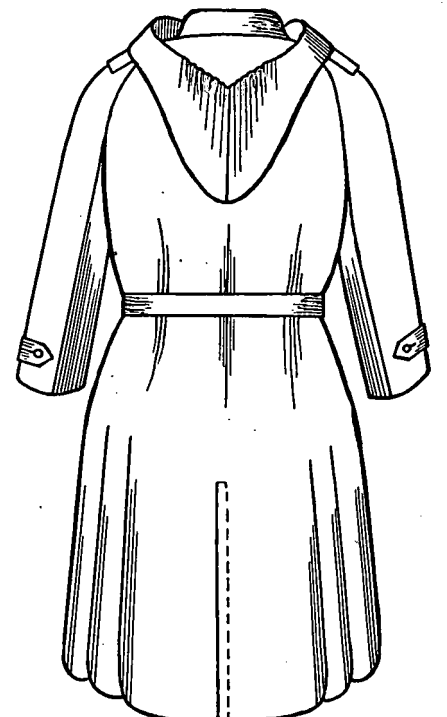


Fig. 75

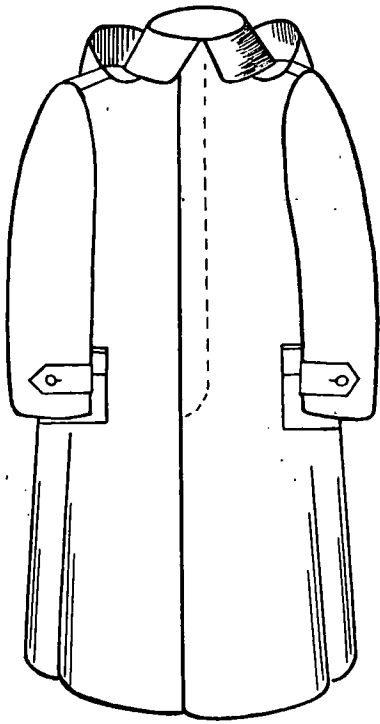


Fig. 76

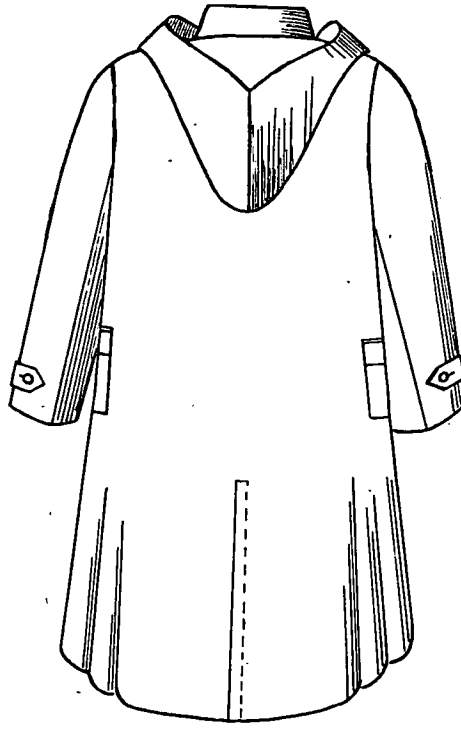


Fig. 77

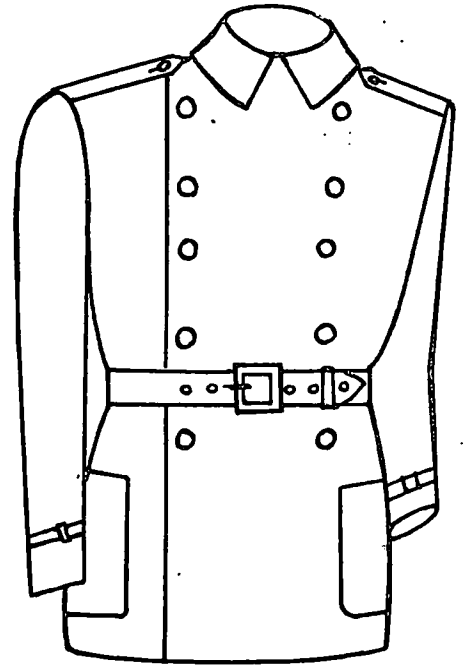


Fig. 78

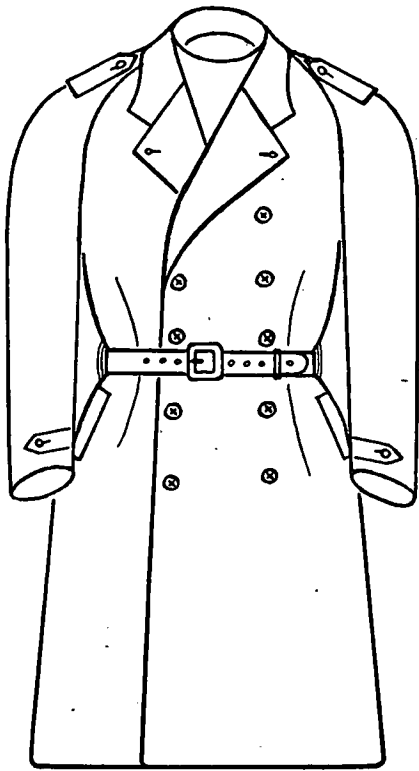


Fig. 79

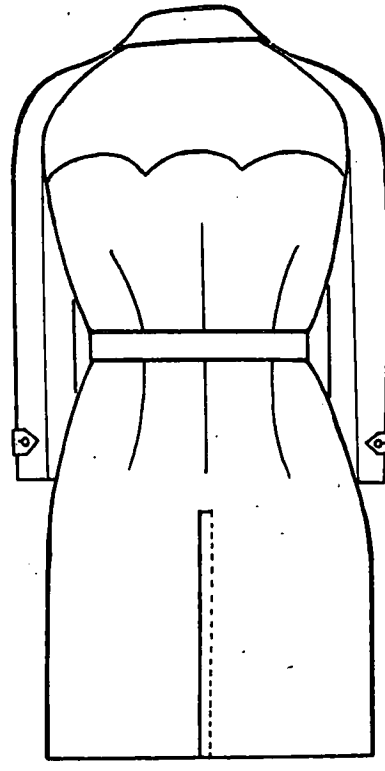


Fig. 80

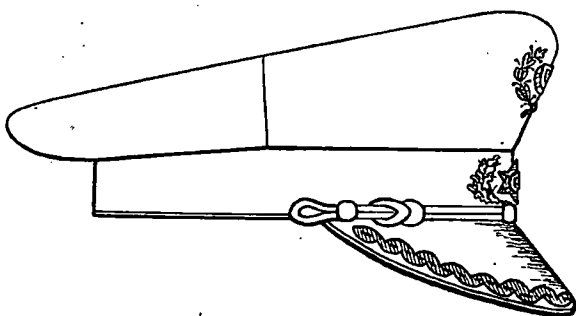


Fig. 81

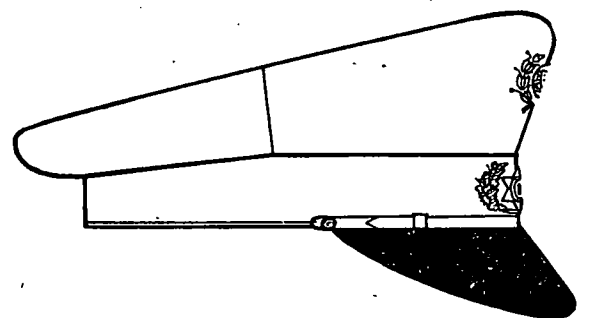


Fig. 82

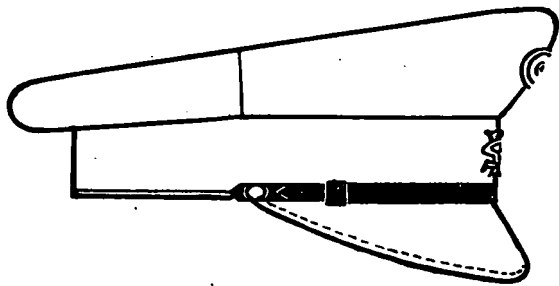


Fig. 83

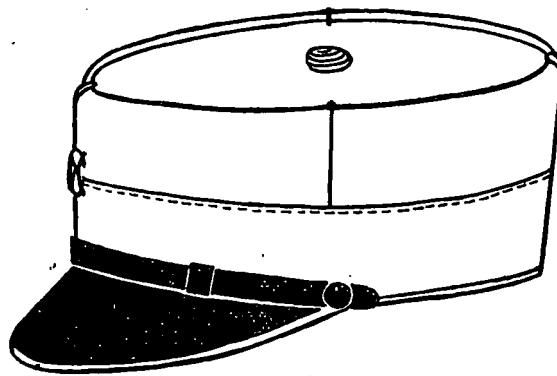


Fig. 84



Fig. 85

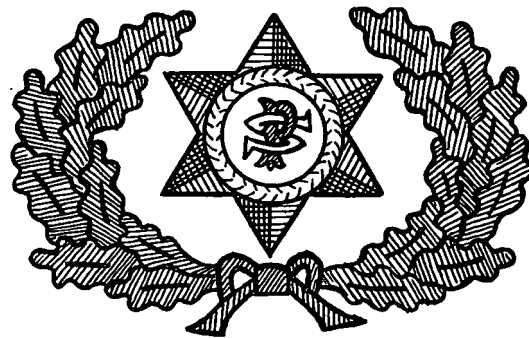


Fig. 86

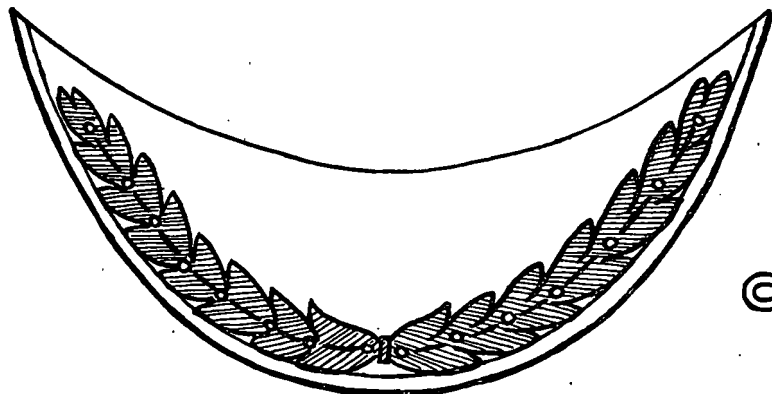


Fig. 87



Fig. 90

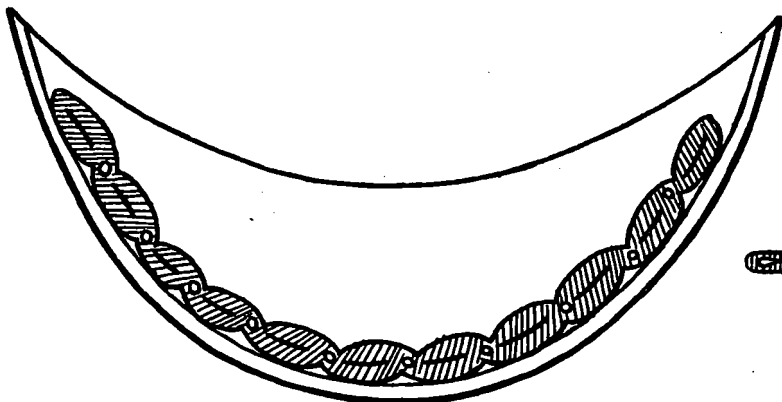


Fig. 88

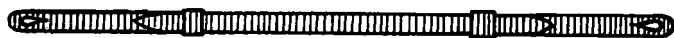


Fig. 91

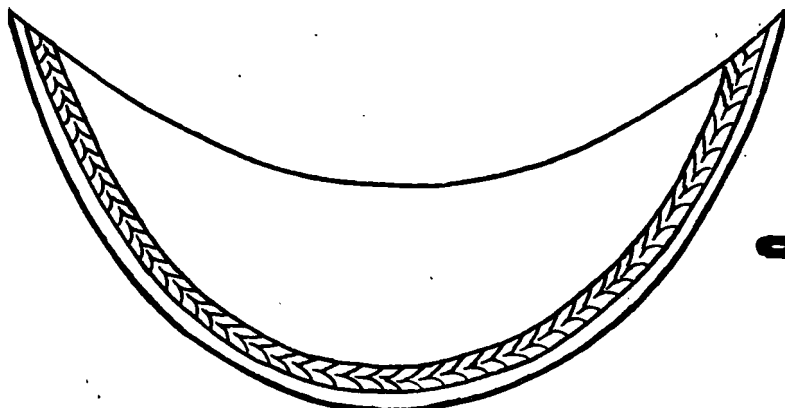


Fig. 89



Fig. 92

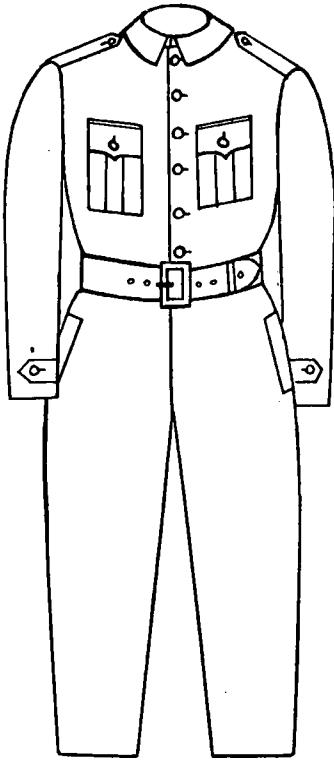


Fig. 93

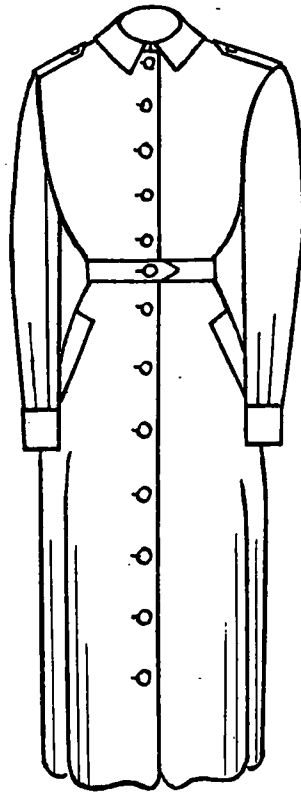


Fig. 94

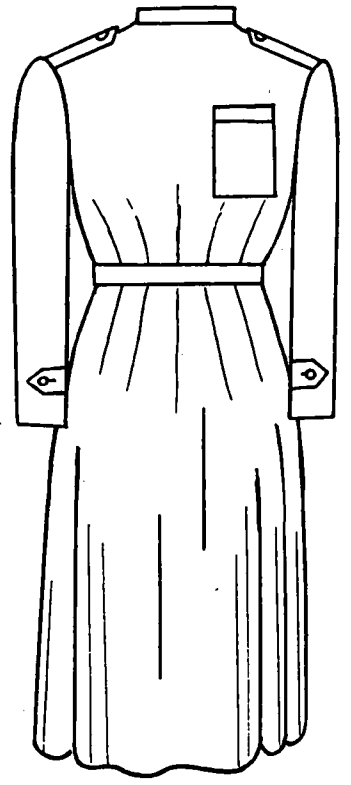


Fig. 95

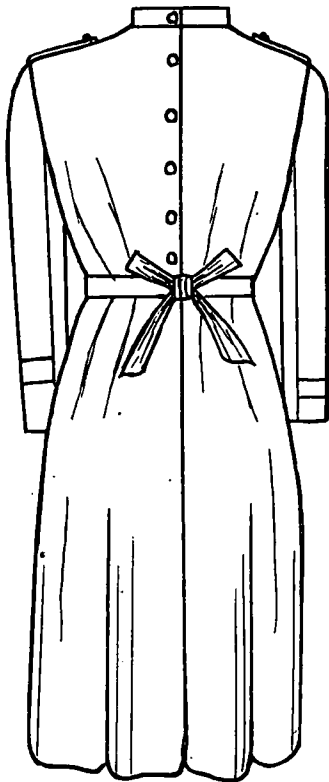


Fig. 96

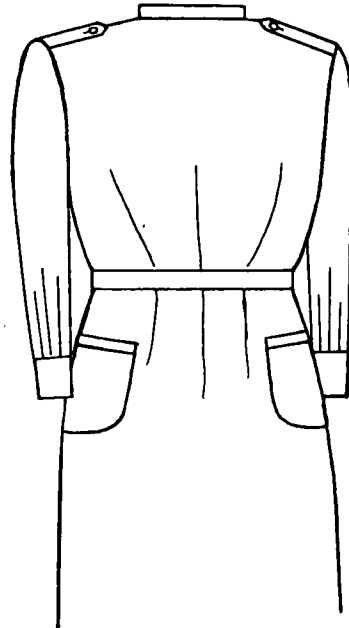


Fig. 97

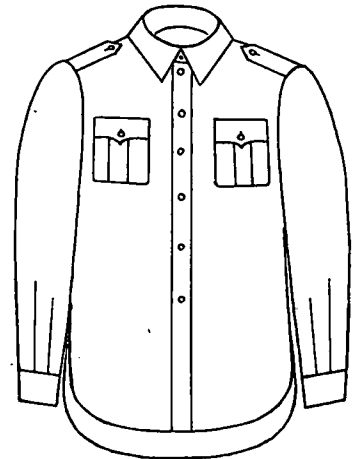


Fig. 99

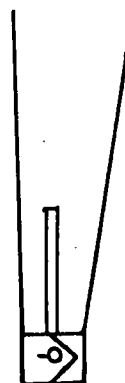


Fig. 98

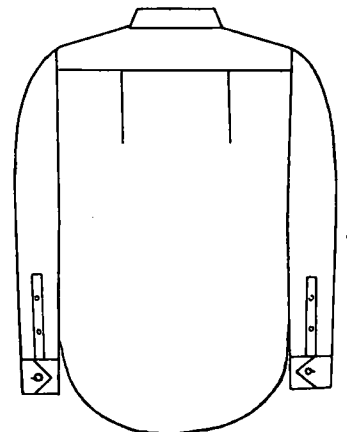


Fig. 100

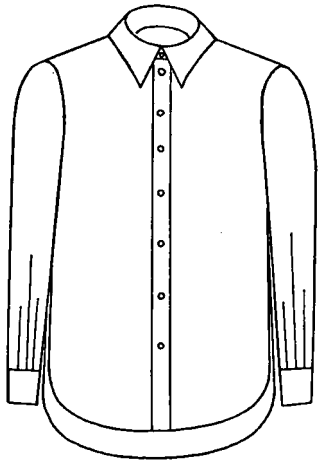


Fig. 101

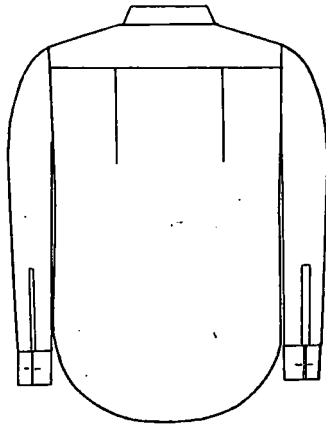


Fig. 102

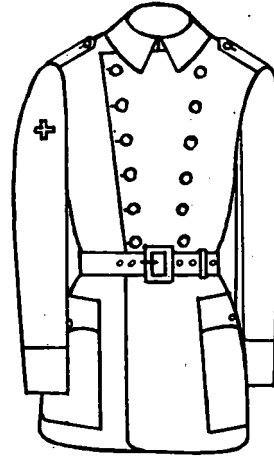


Fig. 103

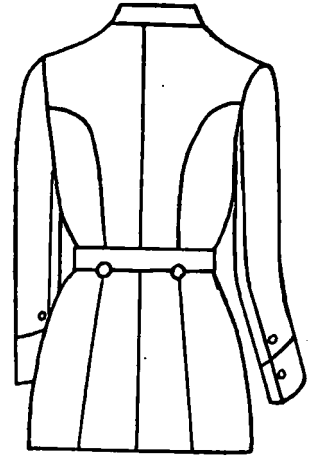


Fig. 104

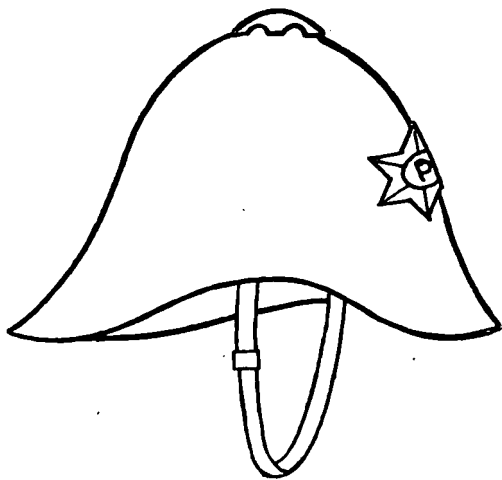


Fig. 105

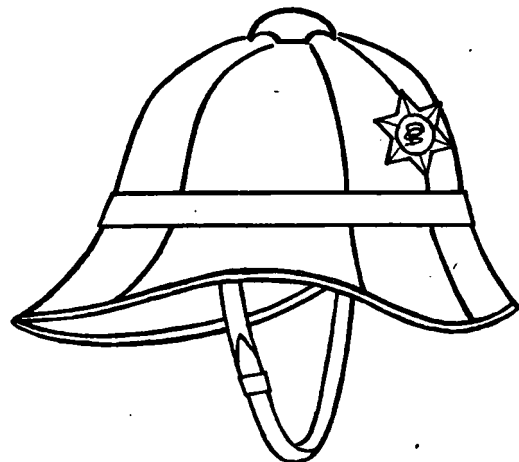


Fig. 106

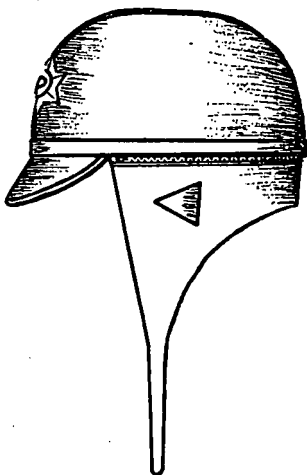


Fig. 107

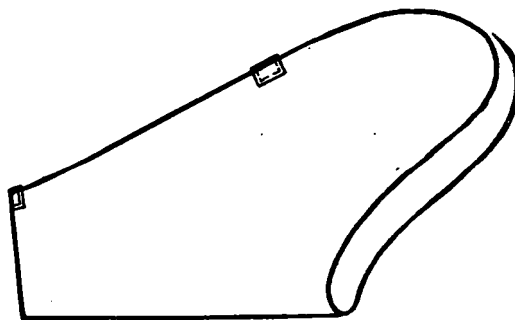


Fig. 108

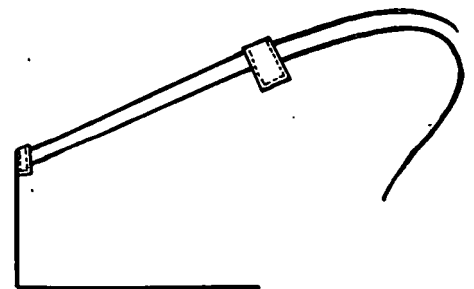


Fig. 109

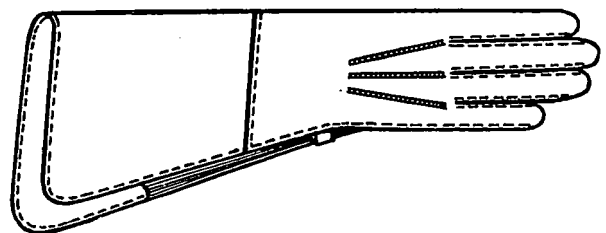
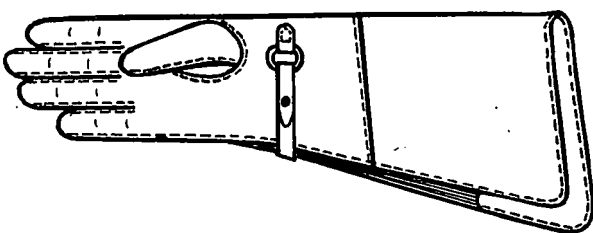


Fig. 110

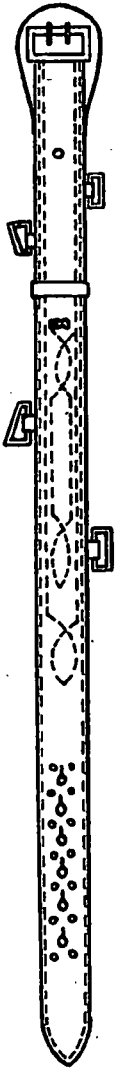


Fig. 111

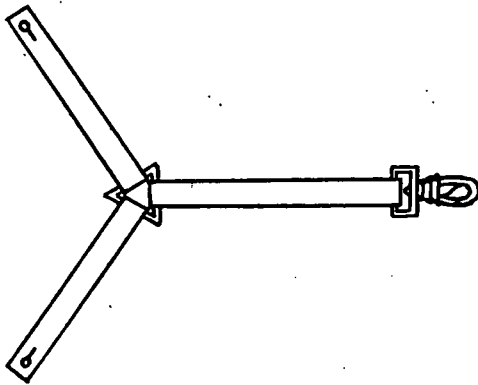


Fig. 112

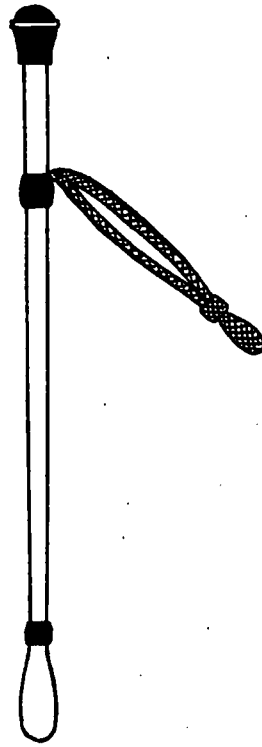


Fig. 114



Fig. 115

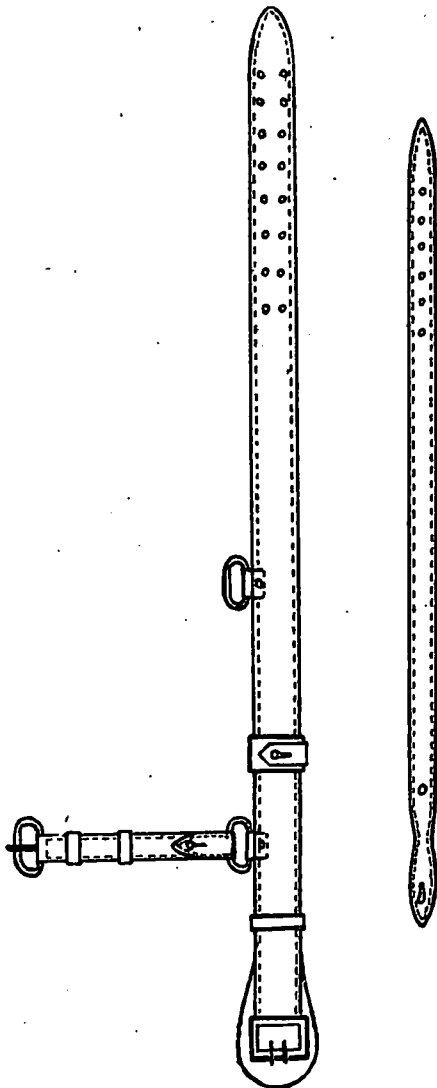


Fig. 113

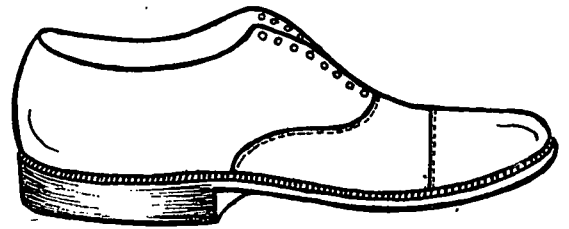


Fig. 116

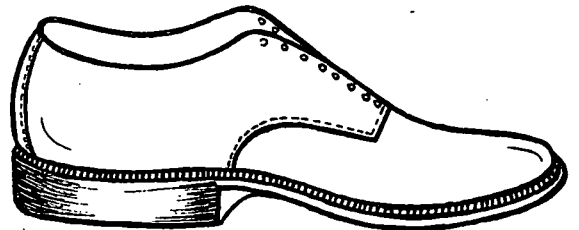


Fig. 117



Fig. 118

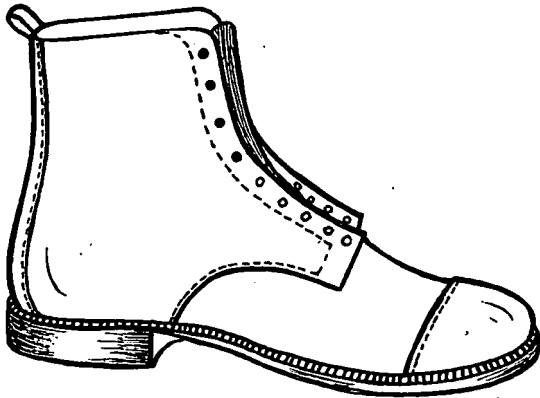


Fig. 119

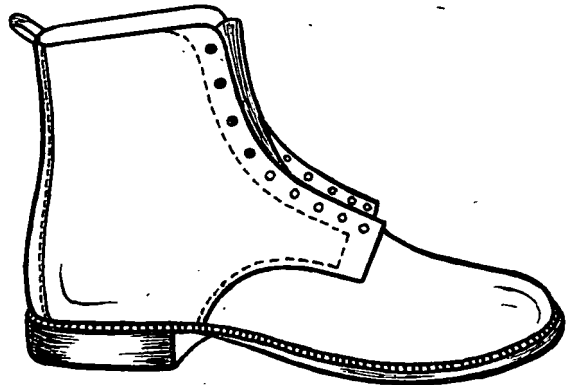


Fig. 119-A

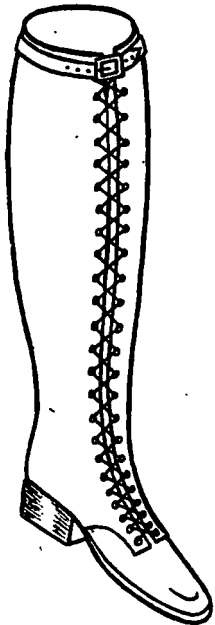


Fig. 120

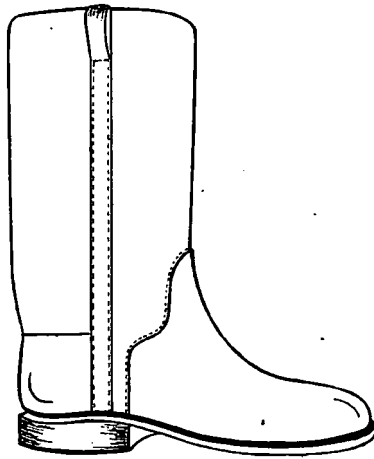


Fig. 121

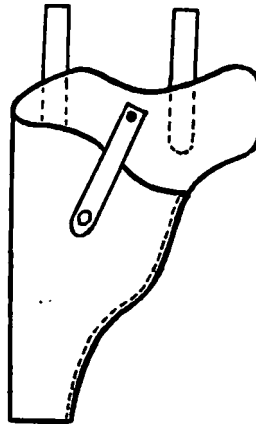


Fig. 122

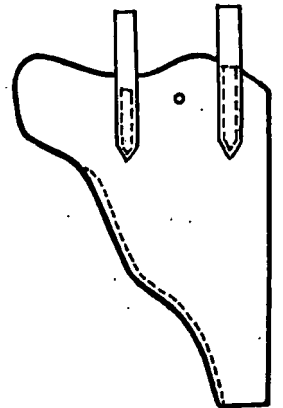


Fig. 123

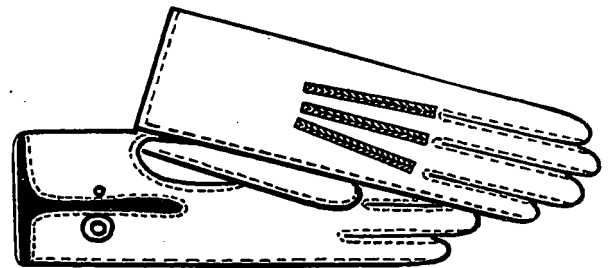


Fig. 126

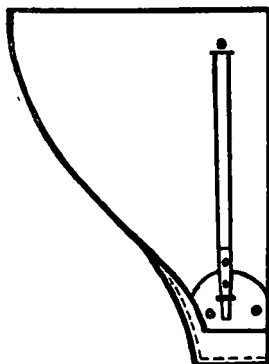


Fig. 124

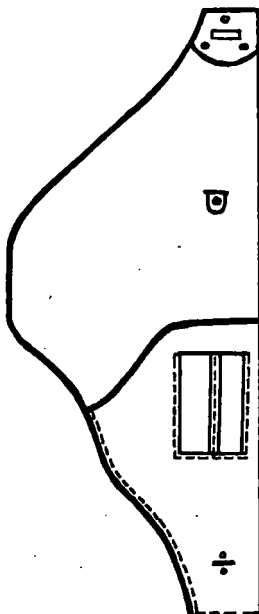


Fig. 125

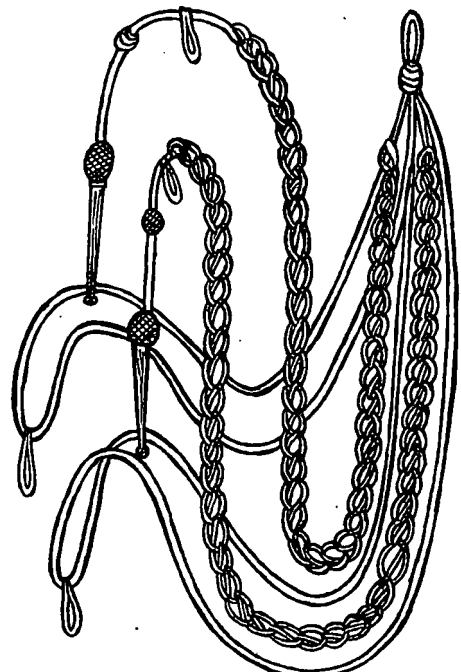


Fig. 127

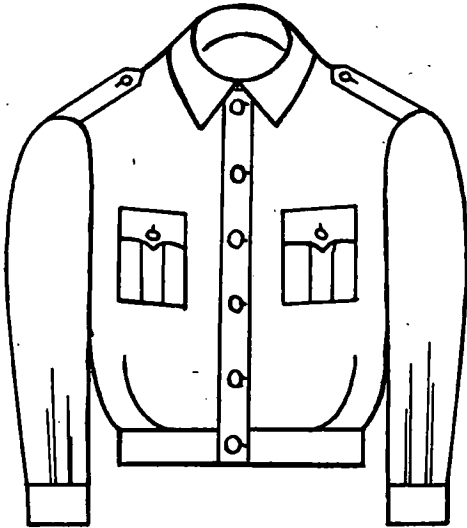


Fig. 128

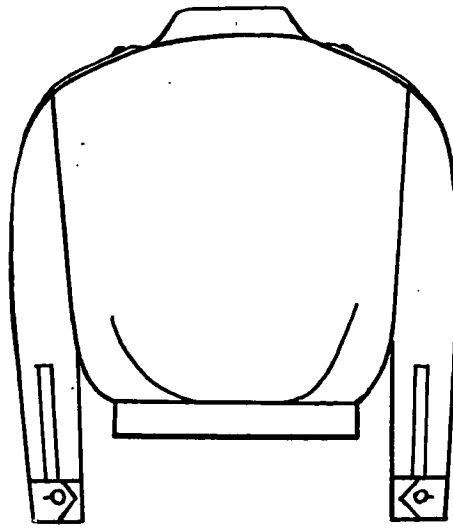


Fig. 129

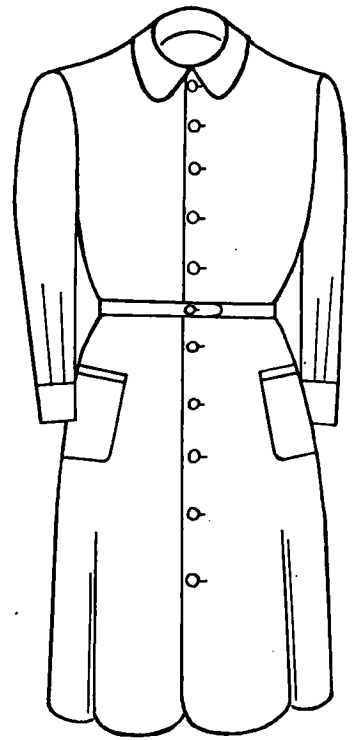


Fig. 130



Fig. 131

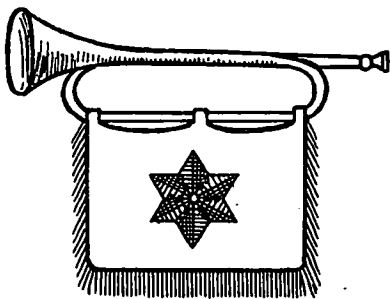


Fig. 132

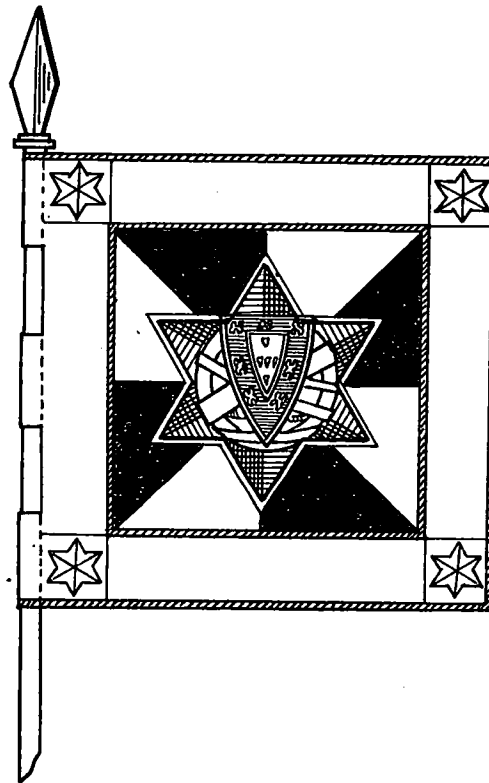


Fig. 133

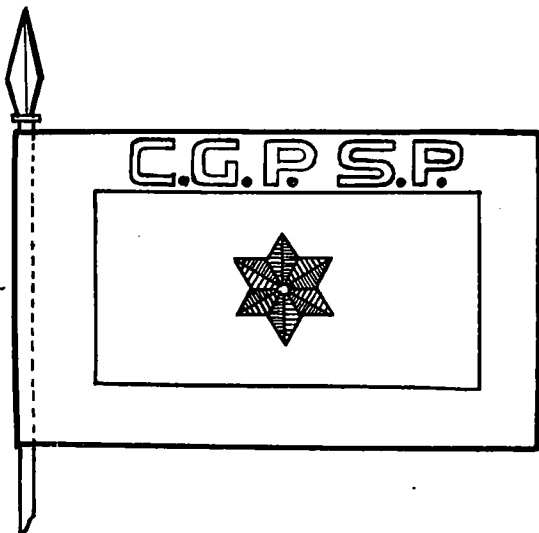


Fig. 134

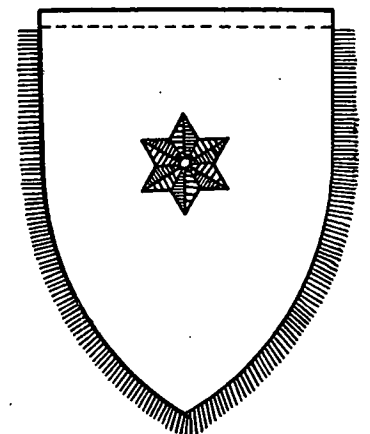


Fig. 135

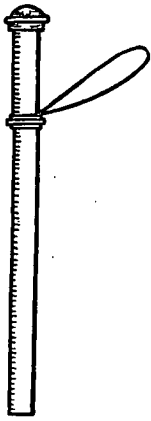


Fig. 136



Fig. 137

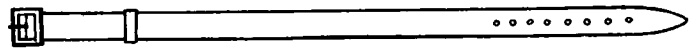


Fig. 138

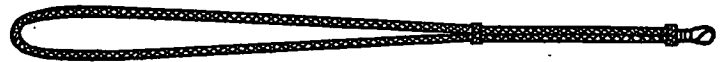


Fig. 139



Fig. 140

Comando-Geral da Polícia de Segurança Pública, 10 de Setembro de 1958. — O Comandante-Geral, *Mário Cunha*, coronel.

MINISTÉRIO DAS FINANÇAS

Direcção-Geral da Contabilidade Pública

Decreto n.º 41 849

Em execução do artigo 3.º do Decreto-Lei n.º 41 270, de 16 de Setembro de 1957;

Usando da faculdade conferida pelo n.º 3.º do artigo 109.º da Constituição, o Governo decreta e eu promulgo o seguinte:

Artigo 1.º São anuladas as seguintes quantias previstas no orçamento das receitas aprovado para o corrente ano económico:

CAPITULO 3.º

Indústrias em regime tributário especial

Artigo 33.º «Imposto ferroviário»	5:400.000\$00
Artigo 34.º «Imposto de camionagem e taxa de compensação»:	
Imposto	20:500.000\$00
Taxa	86:500.000\$00
	<hr/>
	62:400.000\$00

Art. 2.º É aumentada com a quantia de 62:400.000\$ a previsão da verba inscrita no capítulo 2.º, artigo 17.º, do mesmo orçamento.

Art. 3.º É aberto no Ministério das Finanças, a favor do Ministério das Comunicações, um crédito especial da importância de 62:400.000\$, devendo a mesma quantia ser adicionada à verba descrita no capítulo 3.º, divisão «Fundo Especial de Transportes Terrestres», artigo 40.º «Pagamento de serviços e diversos encargos», do orçamento respeitante ao corrente ano económico do segundo dos mencionados Ministérios.

Art. 4.º Para compensação do crédito aludido no artigo precedente é adicionada igual quantia à verba descrita no capítulo 8.º «Consignações de receita», do grupo «Fundos especiais para fomento», artigo 278.º «Fundo Especial de Transportes Terrestres», do orçamento das receitas para o actual ano económico.

Publique-se e cumpra-se como nele se contém.

Paços do Governo da República, 10 de Setembro de 1958. — AMÉRICO DEUS RODRIGUES THOMAZ — *António de Oliveira Salazar* — *António Manuel Pinto Barbosa* — *Carlos Gomes da Silva Ribeiro*.

MINISTÉRIO DAS OBRAS PÚBLICAS

Direcção-Geral dos Edifícios e Monumentos Nacionais

Decreto n.º 41 850

Considerando que foi adjudicada a José António Fernandes Gonçalves a empreitada de «Escola de Alunos Marinheiros — Reparação dos tectos das casernas»;

Considerando que para a execução de tais obras, como se verifica do respectivo caderno de encargos, está fixado o prazo de cento e oitenta dias, que abrange parte do ano de 1958 e do de 1959;

Tendo em vista o disposto no artigo 22.º e seu § 1.º do Decreto-Lei n.º 41 375, de 19 de Novembro de 1957;

Usando da faculdade conferida pelo n.º 3.º do artigo 109.º da Constituição, o Governo decreta e eu promulgo o seguinte:

Artigo 1.º É autorizada a Direcção-Geral dos Edifícios e Monumentos Nacionais a celebrar contrato com José António Fernandes Gonçalves para a execução da empreitada de «Escola de Alunos Marinheiros — Reparação dos tectos das casernas», pela importância de 164.427\$10.

Art. 2.º Seja qual for o valor das obras a realizar, não poderá a Direcção-Geral dos Edifícios e Monumentos Nacionais despende com pagamentos relativos às obras executadas, por virtude de contrato, mais de 64.427\$10 no corrente ano e 100.000\$, ou o que se apurar como saldo, no ano de 1959.

Publique-se e cumpra-se como nele se contém.

Paços do Governo da República, 10 de Setembro de 1958. — AMÉRICO DEUS RODRIGUES THOMAZ — *António de Oliveira Salazar* — *António Manuel Pinto Barbosa* — *Eduardo de Arantes e Oliveira*.

Decreto n.º 41 851

Considerando que foi adjudicada a Francisco de Figueiredo Miroto a empreitada de «Convento de Lorvão (adaptação a hospital de alienados) — Águas e saneamento»;

Considerando que para a execução de tais obras, como se verifica do respectivo caderno de encargos, está fixado o prazo de duzentos e dez dias, que abrange parte do ano de 1958 e do de 1959;